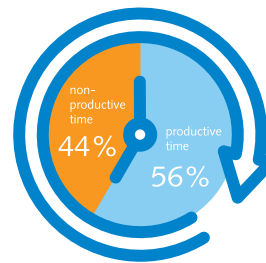




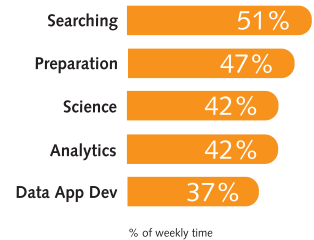
Attention is the new currency of digitalization

Simple access to your test data enables your Analysis department to work effectively and efficiently. You can achieve this by ensuring that not just the metadata but also the measurement results can be searched, including at the channel level. With MaDaM, Kistler provides a measurement data management system that simplifies and accelerates analysis data handling.

According to a study by the International Data Corporation (IDC), data workers spend roughly 44 % of their time on unproductive activities. The most common of these activities are



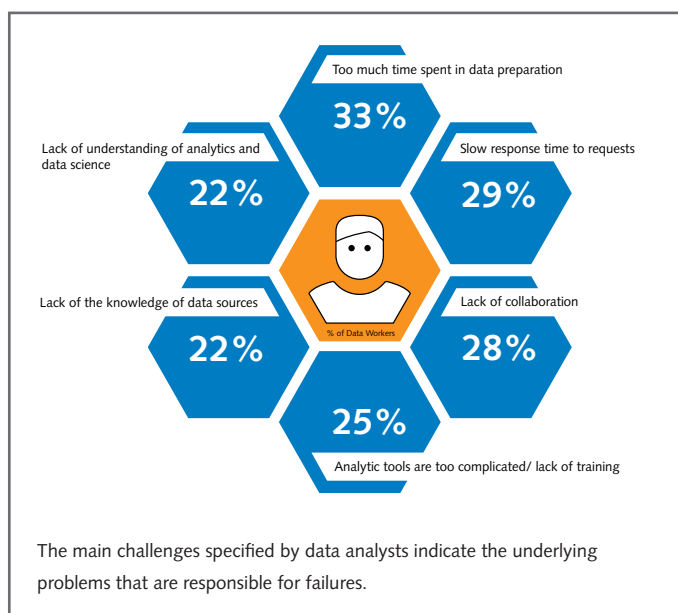
Average proportion of time per activity that is not used productively



searching for and preparing data, regardless of the role of the data worker. The majority of time is lost during data preparation due to long waiting times for responses and a lack of cooperation.

MaDaM helps to reduce these losses: automated conversion greatly simplifies manual data preparation. The solution enables data analysts to carry out searches independently via channel data without previous metadata knowledge. This eliminates time-consuming inquiries, while the centralized platform for analysis data effectively encourages cooperation.

MaDaM not only provides analysts with data, it also enables them to use powerful search methods and link supporting documentation in the form of documents, photos and videos. Analysts can use expected measurement values as a template or to search for similar tests. This saves a lot of time and reduces errors when creating new entries. Keep track of your analyses and stop wasting time searching. Utilize these newfound resources for productive, value-adding activities.



Source: IDC Data Preparation, Analytics and Science Survey

Which problems does MaDaM solve out of the box?

Time lost searching for information:

- Central interface where everyone can search – single access point of truth – for all departments that generate measurement data
- Tailored search functions for individual departments

Lack of transparency within the company:

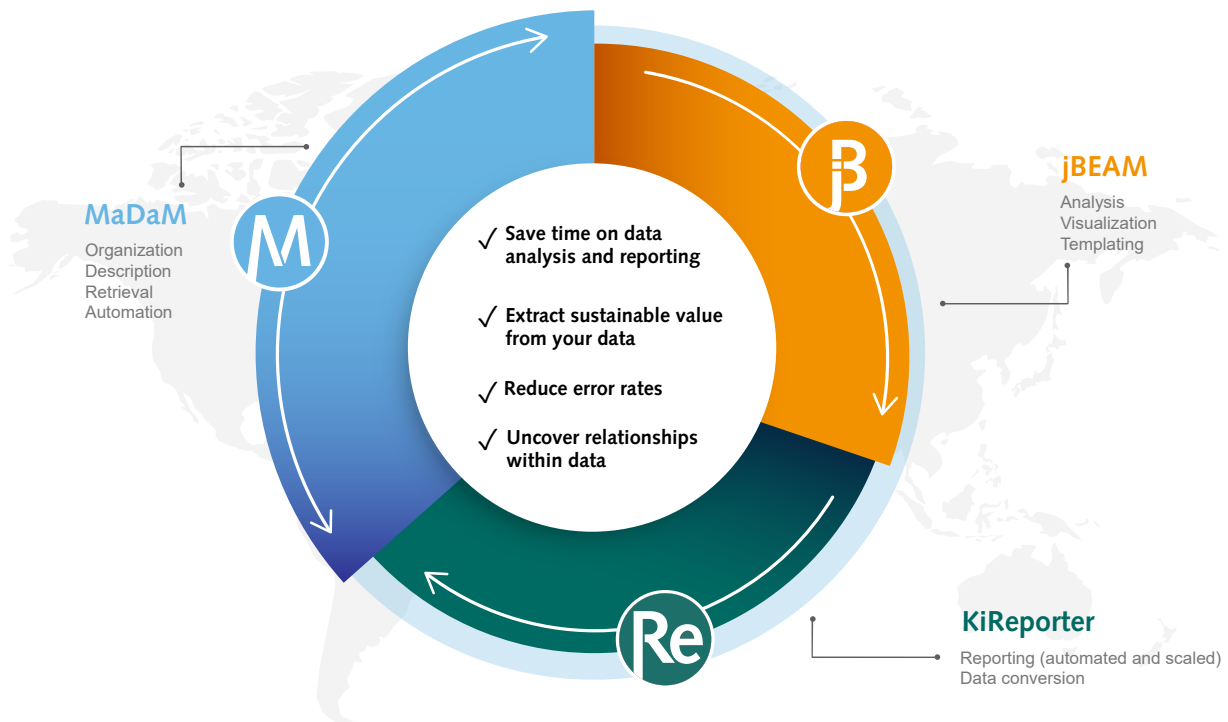
- Data visibility from source to service synergy effects

Security:

- Roles and rights simplify compliance with data security and privacy requirements

Errors made during routine tasks:

- Automated data import after a test is complete
- Data is enriched with additional functions during import (e.g. channel impairment, standard- or company-specific calculations) that can also be used as search terms
- Automated reference comparisons for quick plausibility checks of test results



Enable your team to work more efficiently – with the integrated software solution from Kistler

Benefits

Use data from multiple sources

- Manage data exported from your existing DAQ systems and data loggers
- Build a future-proof data management system

Find all the data you need for the task at hand

- Add meaning by describing data
- Normalize metadata, channel names, and units
- Find and access data immediately – regardless of sources

Gain insights and make decisions

- Inspect channel previews quickly
- Perform in-depth analyses with jBEAM, our expert tool
- Automate reporting with KiReporter

Place your data wherever you need it

- Choose on-premises or cloud deployment
- Scale according to your needs
- Re-use existing corporate user directories

Kistler Group
Eulachstrasse 22
8408 Winterthur
Switzerland
Tel. +41 52 224 11 11

The Kistler Group includes Kistler Holding AG and all its subsidiaries in Europe, Asia, the Americas and Australia.

Find your local contact at
www.kistler.com

KISTLER
measure. analyze. innovate.