



**A new standard
for infrastructure
protection**

Keeping road usage under control

KiTrafic Plus is a complete solution for vehicle enforcement
and preselection including Weigh In Motion

A full-scope solution from one source

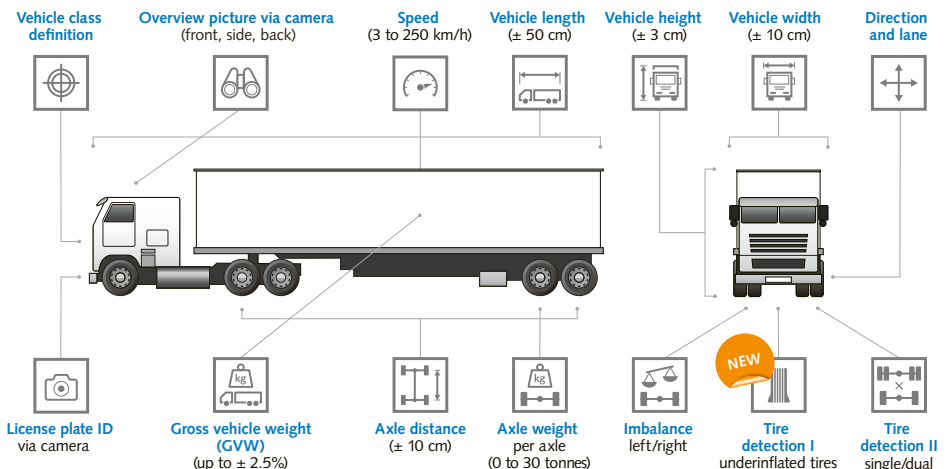
A new and comprehensive solution for traffic monitoring based on Weigh In Motion: KiTraffic Plus gives you full control over direct enforcement or preselection of vehicles, bridge and tunnel protection, and many other applications.

With road usage and heavy truck traffic escalating all over the world, automated systems play a more important part than ever before: as well as monitoring traffic, they also have to enforce vehicles that violate laws or regulations governing weight, speed, dimensions and other parameters. KiTraffic Plus gives you a flexible solution that can be tailored to your specific scenario and application: you, the customer, are free to choose which components you need for preselection or direct enforcement of noncompliant vehicles.

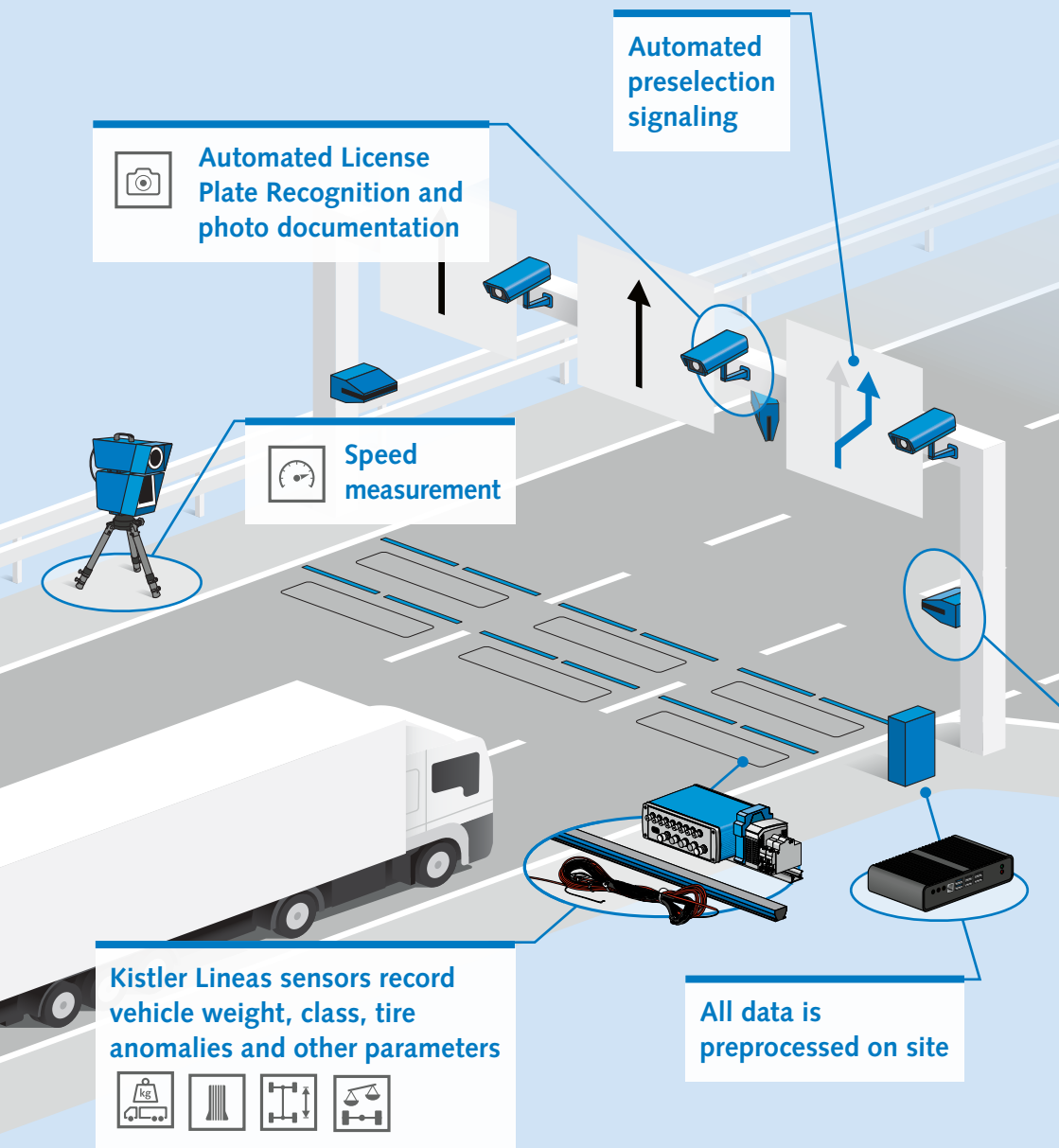
As an open ecosystem, KiTraffic Plus can integrate field and measurement devices of all types. Standard options include:

- WIM system based on piezoelectric quartz sensors to capture axle load, gross weight, vehicle class and tire anomalies
- Integrated or external speed measurement
- Camera with ALPR (ANPR) capability for vehicle photos and license plate recognition
- Dimension scanner to capture a vehicle's width, length and height
- Software from Kistler to display preselection data live during traffic spot checks or post-processing of offenses

One system to measure everything



A complete solution for vehicle preselection and enforcement





Measurements are verified manually, vehicle is checked for further violations

All data is post-processed in the back office



Vehicle dimensions are captured



KiTtraffic Plus – with open architecture for individual traffic solutions tailored perfectly to your needs

For more information, visit:

www.kistler.com/WIM



All the software you need for efficient data management

For vehicle preselection as well as direct enforcement, data visualization and processing are key factors in efficient daily practice. We offer you dedicated software packages that cut post-processing effort to the minimum, no matter which application you need.

Kistler Studio is a full back-office software solution for managing and evaluating measurements, entering additional data and post-processing enforcement cases. It offers comfortable export and print functions, together with user management to implement different access levels and rights.

Kistler Studio

Once you've acquired your datasets, preparing them for legal prosecution is fast and simple – with step-by-step guidance from Kistler Studio.

1. Import all vehicle data records
2. Verify all measurements
3. Add metadata and driver information
4. Add further evidence
5. Adjust camera pictures
6. Freeze dataset with unique reference number

Kistler Checkpoint

Efficient vehicle preselection depends on capable software. With Kistler Checkpoint, you get the data you need in real time, displayed on a tablet or laptop: exactly the support that police officers need to do their job.

When checkpoint staff stop a truck because of traffic violations, they must have the relevant data to hand. Kistler Checkpoint displays all the measured vehicle data directly, together with an overview image and the license plate photo. Various options are available to filter the results, and users can quickly access data from vehicles that passed the measurement station very recently.

1. Real-time processing

- classify vehicle, check for violations, pre-filter data records

2. Live view of vehicle

- shows measured parameters and overview image, indicates violations

3. Preselection

- truck is signaled to stop

4. Verification

- verify with static measurements, manual inspection

5. Complete the data record

- note any further violations using check-boxes and free text

The diagram illustrates the Kistler Checkpoint software interface on two devices: a tablet and a laptop. The tablet screen shows a live video feed of a red truck in a tunnel, with a sidebar on the right displaying a list of measured data and a red pictogram indicating a violation. The laptop screen shows a historic list of vehicle data records, including a zoomed-in view of a license plate (ZH 303 429) and a digital read. Callouts point to specific features: 'Overview image' points to the live video feed on the tablet; 'Expandable list of measured data' points to the sidebar on the tablet; 'Red pictogram to indicate violation' points to the red icon in the sidebar; 'License plate zoom-in and digital read' points to the zoomed-in license plate on the laptop; and 'Historic list of vehicle data records' points to the list of records on the laptop.

Overview image

Expandable list of measured data

Red pictogram to indicate violation

License plate zoom-in and digital read

Historic list of vehicle data records

Full service package for carefree operation

We want every KiTraffic Plus system to deliver maximum accuracy and reliability throughout a long service lifetime. That's why we offer our customers a complete service package.

Overview of available KiTraffic Plus services



Consulting

Be sure to find the optimal system setup and best location for your installation



Project management

Complete execution from tender to handover



Training

Learn how to get the most from your system



Calibration

Maximum accuracy and verification support



Maintenance service

Opt for regular inspection and calibration!

Kistler Group

Eulachstrasse 22
8408 Winterthur
Switzerland
Tel. +41 52 224 11 11

Kistler Group products are protected by various intellectual property rights. For more details, visit www.kistler.com
The Kistler Group includes Kistler Holding AG and all its subsidiaries in Europe, Asia, the Americas and Australia.

Find your local contact at
www.kistler.com

KISTLER

measure. analyze. innovate.